



Chloe Jane

68ft Traditional Stern

4 Berths, Conventional Layout

£68,000 - Reduced

Chloe Jane is a 68ft traditional stern built by Heron Boat builders in 2003. 4 berths in a conventional layout .Isuzu 54hp engine. Repainted 2016.

Layout: Converted Boatman's cabin, bedroom, office space, dinette, galley, saloon, doors to foredeck.

Converted Boatman's cabin: Now a utility room with storage, washing machine, fridge.

Bathroom: Walk through bathroom, wash basin, corner shower cubicle, towel rail, cassette toilet, blinds.

Office Space: Storage.

Dinette: Pullman dinette, side hatch, radiator, curtains.

Galley: Cooker, dual sinks, fridge, freezer, work surfaces, blinds, cupboards, shelves.

Saloon: Sofa, tv, shelves, cupboards, stove, doors to foredeck.



Specification: **Chloe Jane**

Steel:

10mm/6mm/4mm/4mm`

Dimensions:

Length 68' / Beam 6'10"

Hull Builder:

Heron Boat Builders

Fit-out:

Heron Boat Builders

Engine:

Isuzu 48

Hours:

2074

Bowthruster: Yes

Gearbox:

PRM Newage flexible coupling

Batteries:

1 starter, 5 domestic (new 2016)

Water Tank:

900 Litres (stainless steel)

Diesel Tank:

135 Litres

Heating:

Alde gas central heating, Suirrel Morso solid fuel fire

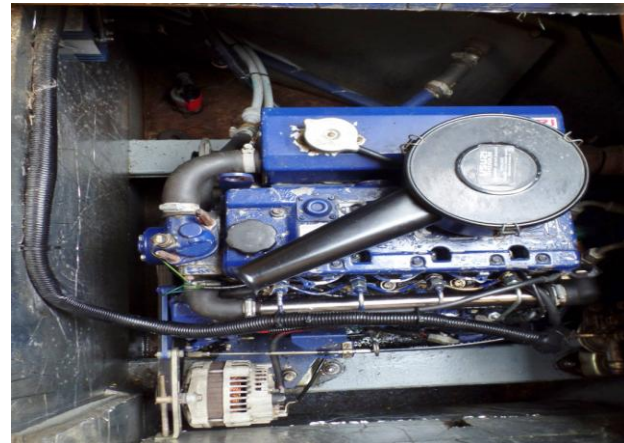
Water Heating:

Alde Gas, calorifier off engine, immersion heater

Electrics:

12V, 240V Sterling Pure Sinewave inverter 1500-3000 watts, galvanic isolator, Sterling battery charger petrol generator..

B.S.S: August 2019



£68,000 - Reduced